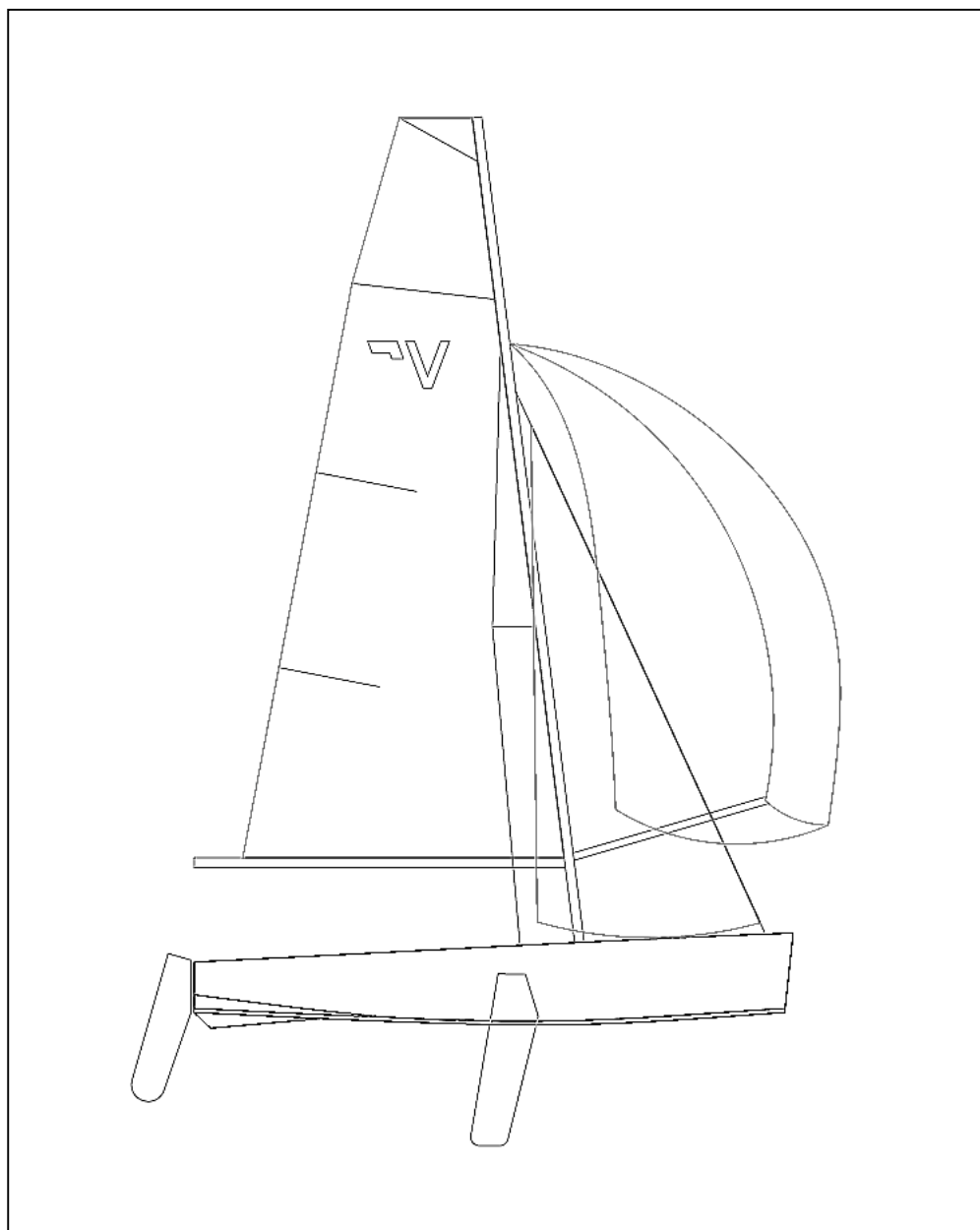


INTERNATIONAL

VAURIEN

CLASS RULES

SAILS RULES AMENDMENT 2008



Section A – Sails - Use

A.1.1 MODIFICATIONS, MAINTENANCE AND REPAIR

- (a) **Sails** shall not be altered in any way except as permitted by these **rules**.
- (b) Routine maintenance such as mending is permitted without re-measurement and re-**certification**.

A.1.2 LIMITATIONS

- (a) Not more than one mainsail, one foresail and one spinnaker shall be used during an event, except when a sail has been lost or damaged beyond repair. Such replacement shall be made only with the approval of the Race Committee.

A.1.3 DIMENSIONS

See Section B.

A.1.4 MAINSAIL

(a) IDENTIFICATION

The national letters and sail numbers shall comply with the RRS.

(b) USE

- (1) The **sail** shall be hoisted on a halyard. The arrangement shall permit hoisting and lowering of the **sail** at sea.
- (2) The highest visible point of the **sail**, projected at 90° to the mast **spar**, shall not be set above the lower edge of the mast **upper limit mark** (band n° 3). The intersection of the **leech** and the top of the boom **spar**, each extended as necessary, shall not be behind the fore side of the boom **outer limit mark**.
- (3) **Luff** and **foot** bolt ropes and slides shall be in the **spar** grooves or tracks.
- (4) Battens shall be fitted into their respective batten pockets when sailing, except in the case of accidental loss or damage.

A.1.5 FORESAIL

(a) USE

- (1) The foresail shall be hoisted with the foresail halyard. The arrangement shall permit the hoisting and lowering of the **sail** at sea.

A.1.6 SPINNAKER

(a) IDENTIFICATION

The sail numbers shall comply with the RRS except otherwise stated in these rules

(b) USE

- 1) The spinnaker shall be hoisted on the spinnaker halyard. The arrangement shall permit the hoisting and lowering of the sail at sea.

Section B – Sails – Measurement

B.1 PARTS

B.1.1 MANDATORY

- (a) Mainsail
- (b) Headsail

B.1.2 OPTIONAL

- (a) Spinnaker

B.2 GENERAL

B.2.1 RULES

- (a) **Sails** shall comply with the **class rules** in force at the time of **certification** ("grandfather rule").

B.2.2 CERTIFICATION

- (a) The **official measurer** shall **certify** mainsails and headsails in the **tack** and spinnakers in the **head** and shall sign and date the **certification mark**.

B.2.3 SAILMAKER

- (a) No licence is required.
- (b) The date of manufacture and the type and weight of cloth shall be indelibly marked near the **head point** by the sailmaker together with his signature or stamp.

B.3 MAINSAIL

B.3.1 IDENTIFICATION

- (a) The class emblem shall conform to the dimensions and requirements as detailed in the diagram hereunder and be placed in accordance with the following provisions.

- (1) The Vaurien class logo shall be shown on both sides of the main sail.
- (2) The Vaurien class logo shall conform to the diagram B.3.1.1 in shape. The size shown is the standard size. The corners may be rounded off.
- (3) The logos shall be placed back to back with the "flag" pointing to the leech, a "mirrored" version being placed on the back side. The logo shall be placed in close vicinity of the upper intermediate batten pocket with a maximum distance to the batten pocket of not more than 100mm. The orientation shall be approximately parallel to the batten pocket.

- (b) Letters and numbers shall comply with ERS.

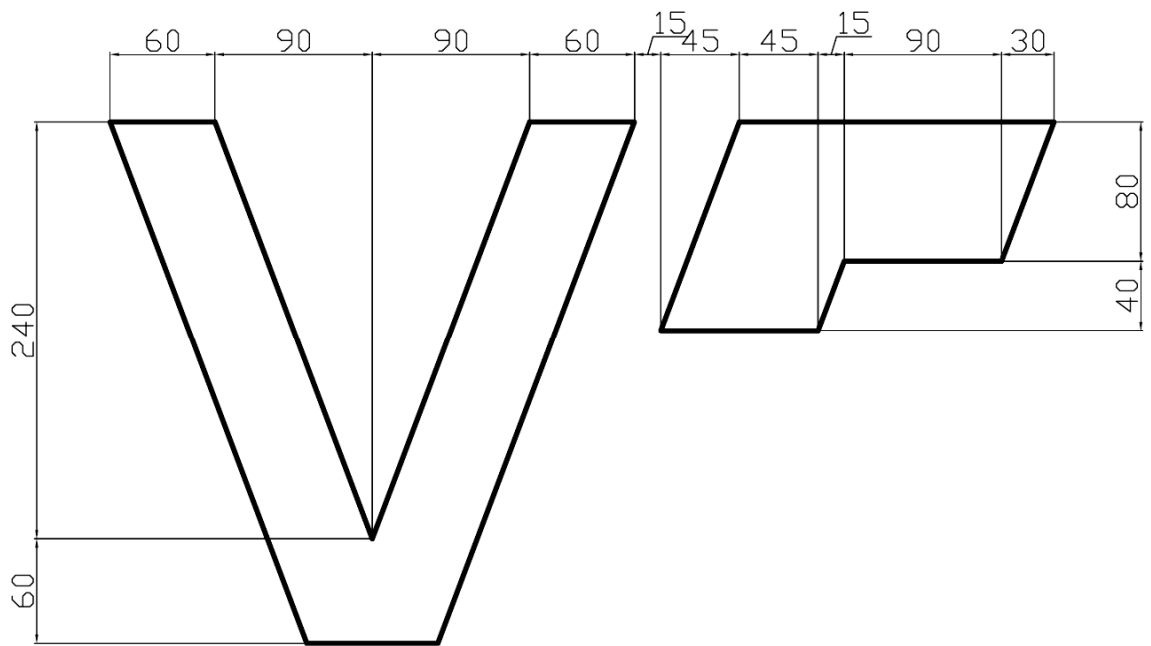


Diagram B.3.1.1

B.3.2 MATERIALS

- (a) The **ply** fibres shall consist of any material except aramid compounds
- (b) Headboard **stiffening** : type, material and shape are optional.
- (c) Sail reinforcement shall consist of **single ply woven layers**.
- (d) Battens : type, material and shape are optional.
- (e) The boltrope shall be of synthetic fibre and not be shockcord.

B.3.3 CONSTRUCTION

- (a) The construction shall be: **soft sail, single ply sail**. There are no limitations for the system of construction except for the three-dimensional moulding.
- (b) The **body of the sail** shall consist of the same **woven ply** throughout.
- (c) The **sail** shall have a maximum of four (4) batten **pockets** in the **leech**.
- (d) The following are permitted: Stitching, glues, tapes, bolt ropes, three corner eyes, headboard with fixings, Cunningham eye or attachment, Cunningham rope, **batten pocket patches**, batten pocket elastic, batten pocket end caps, mast and boom slides, one **window**, tell tales, sail shape indicator stripes, tensioning devices at leech end of the two upper battens and items as permitted or prescribed by other applicable *rules*.
- (e) The total number of panels and their shape and orientation are optional
- (f) The **leech** shall not extend aft of straight lines between:

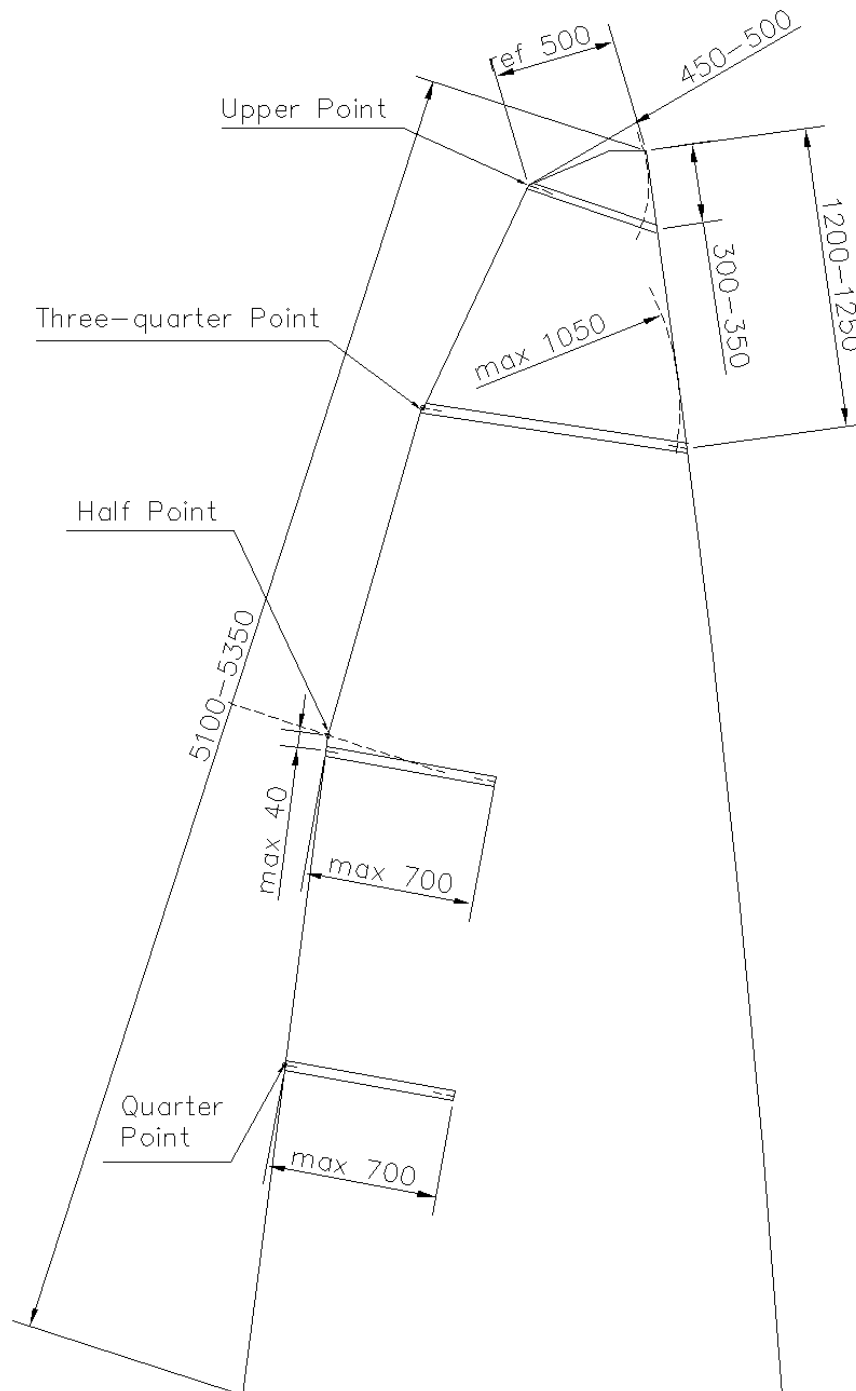
- (1) the **aft head point** and the intersection of the **leech** and the upper edge of the nearest **batten pocket**,
- (2) the intersection of the **leech** and the lower edge of a **batten pocket** and the intersection of the **leech** and the upper edge of an adjacent **batten pocket** below,
- (3) the **clew point** and the intersection of the **leech** and the lower edge of the nearest **batten pocket**.

(g) The **leech** shall be edged by a **folded tabling** or a **taped edge**.

B.3.4 DIMENSIONS

	minimum	maximum
(1) Leech length	5100mm	5350mm
(2) Three-quarter width		1050mm
(3) Upper width at upper leech point 500mm from head point	450mm	500mm
(4) Foot length		2200mm
(5) Weight of ply of the body of the sail		optional
Reinforcements :		
(6) Primary		305mm
(7) Secondary		915mm
(8) Flutter patch		120mm
(9) Chafing patch		300mm
(10) Batten pocket patch		175mm
(11) Tabling width		30mm
(12) Distance from clew point to foot bolt rope		300mm
(13) Distance from tack point to foot bolt rope		300mm
(14) Diameter of bolt rope		7mm
(15) Seam width		30mm
(16) Window area		0,15m ²
(17) Window to sail edge	150mm	
(18) Extension of headboard from head point		150mm
(19) Outside batten pocket length :		
lower intermediate and lowermost pockets		700mm
(20) Outside batten pocket width		40mm
(21) Head point to intersection of leech and centreline of uppermost batten pocket	450mm	500mm
(22) Head point to intersection of luff and centreline of uppermost batten pocket		300mm
(23) Head point to intersection of leech and centreline of upper intermediate batten pocket		optional
(24) Head point to intersection of leech and centreline of lower intermediate batten pocket		optional
(25) Clew point to intersection of leech and centreline of lowermost batten pocket		1300mm
(26) Head point to intersection of luff and centreline of uppermost batten pocket	300mm	350mm

- (27) Head point to intersection of luff and centreline
of upper intermediate batten pocket1200mm.... 1250mm
- (28) Distance from the intersection of the centrelines
of the three lowest batten pockets and leech to
adjacent cross width measurement point..... 40mm



B.4 HEADSAIL

B.4.1 MATERIALS

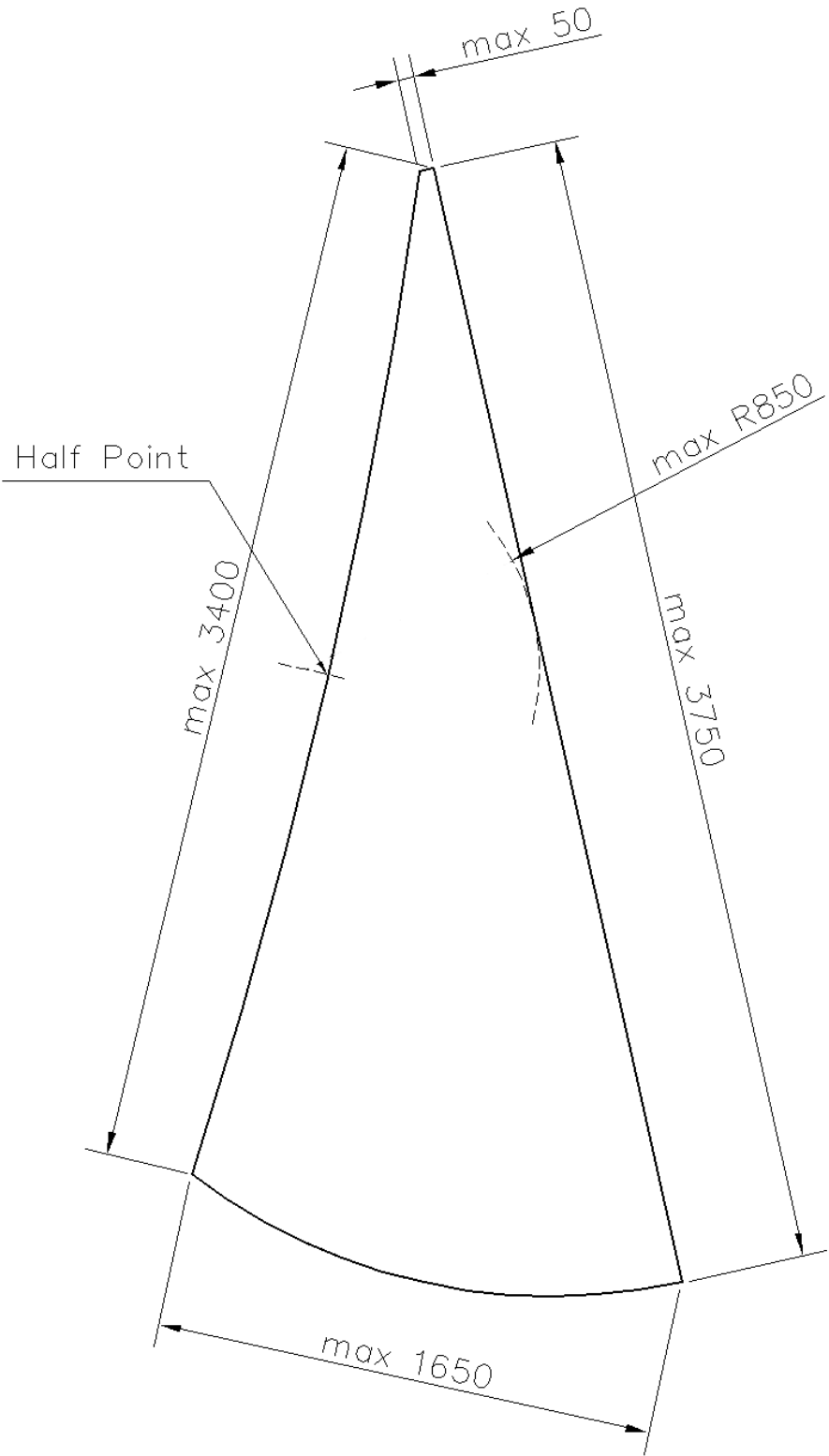
- (a) The **ply** fibres shall consist of any material except aramid compounds.
- (b) **Stiffening** shall consist of single ply layers
- (c) **Sail reinforcement** shall consist of single ply layers.
- (d) The **luff bolt rope** shall be of flexible wire rope of stainless steel.

B.4.2 CONSTRUCTION

- (a) The construction shall be: **soft sail, single ply woven sail**. There are no limitations for the system of construction except for the three-dimensional moulding.
- (b) The **body of the sail** shall consist of the same **woven ply** throughout.
- (c) The following are permitted : stitching, glues, tapes, corner eyes, hanks, tell tales, flutter patches, one **window**, sail shape indicator stripes and items as permitted or prescribed by other applicable *rules*.
- (d) The **leech** shall not extend beyond a straight line from the aft **head point** to the **clew point**.
- (e) The total number of panels and their shape and orientation are optional.
- (f) The **leech** and the **foot** shall be edged by a **folded tabling** or a **taped edge**

B.4.3 DIMENSIONS

	minimum	maximum
(1) Luff length		3750mm
(2) Leech length		3400mm
(3) Foot length		1650mm
(4) Half width		850mm
(5) Top width		50mm
(6) Foot irregularity		10mm
(7) Weight of ply of the body of the sail		optional
Reinforcements		
(8) Primary		260mm
(9) Secondary		780mm
(10) Chafing patch		300mm
(11) Window area		0,15 m ²
(12) Window to sail edge	150 mm	
(13) Bolt rope diameter (stainless steel)	2,5mm	
(14) Tabling width		30mm
(15) Seam width		30mm



B.6 SPINNAKER

B.6.1 MATERIALS

- (a) The **ply** fibres shall consist of any material except aramid compounds.
- (b) **Sail reinforcement** shall consist of single ply layers.

B.6.2 CONSTRUCTION

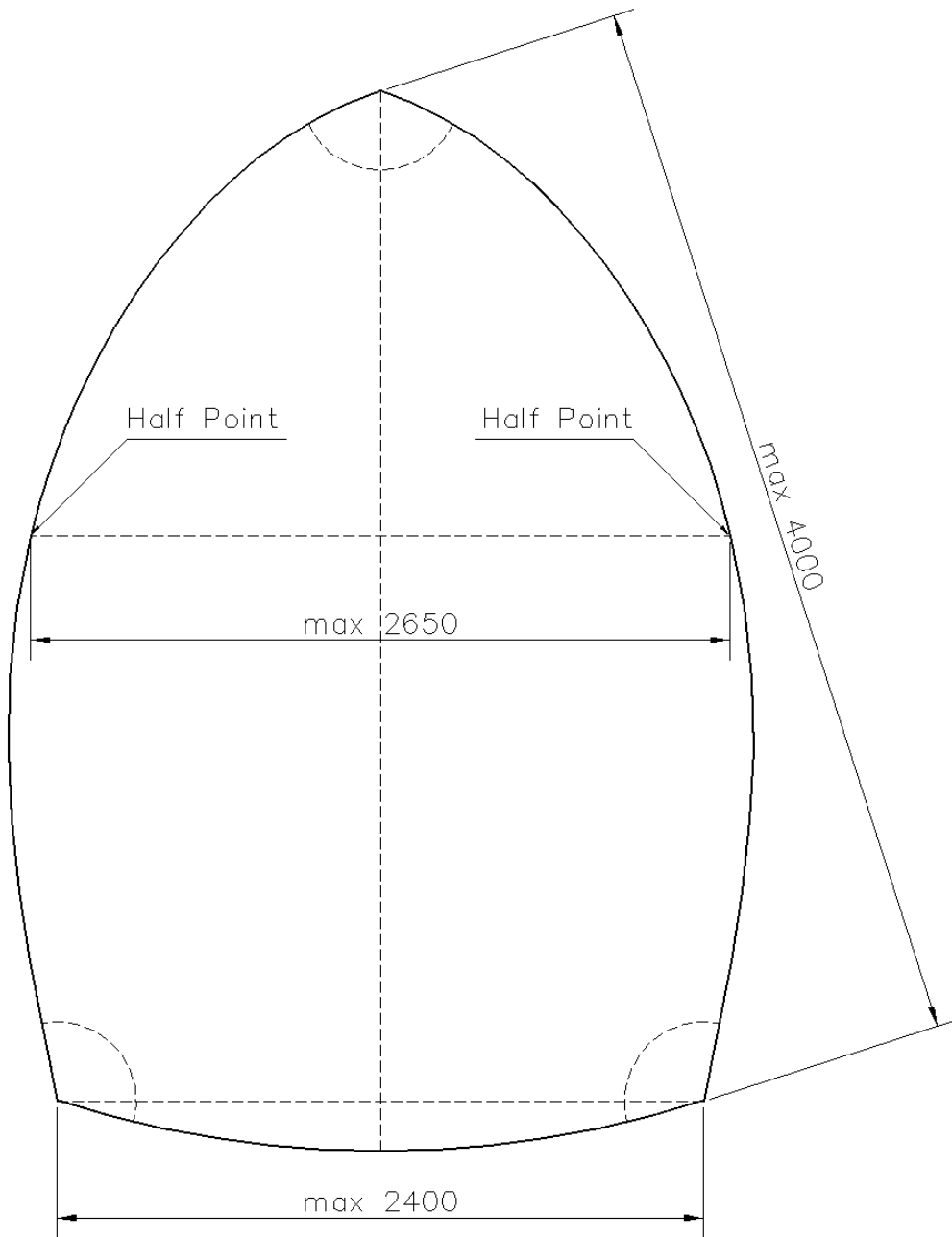
- (a) The construction shall be: **soft sail, single ply sail**. There are no limitations for the system of construction except for the three-dimensional moulding.
- (b) The **body of the sail** shall consist of the same **woven ply** throughout.
- (c) The following are permitted: Stitching, glues, tapes, corner eyes, recovery line eyes, tell tales and items as permitted or prescribed by other applicable *rules*.
- (d) The total number of panels and their shape and orientation are optional
- (e) The **leeches** and the **foot** shall be edged by a **folded tabling** or a **taped edge**

B.6.3 DIMENSIONS

	minimum	maximum
(1) Leech length		4000mm
(2) Foot length		2400mm
(3) Upper width at upper leech points		30mm
(4) Half width		2650mm
(5) Weight of ply of the body of the sail		optional
Reinforcements		
(6) Primary		260mm
(7) Secondary		780 mm
(8) Tabling width		30mm
(9) Seam width		30mm

B.6.4 IDENTIFICATION

- (a) The national letters and sail numbers shall comply with the RRS but may be applied on one side only of the spinnaker



Section C – Spars - Spinnaker Pole

C.5 SPINNAKER POLE

C.5.1 MANUFACTURER

- (a) No licence is required

C.5.2 MATERIALS

- (a) The **pole spar** shall be of aluminium alloy

C.5.3 FITTINGS

- (a) End hooks for the sheets
 (b) Mid length fairleads for spinnaker boom lift and down haul
 (c) A fixed line between the fittings described in C.5.3 (a) which may incorporate knots, toggles or short tubes for easier handling.

C.5.4 DIMENSIONS

	minimum	maximum
Spinnaker pole cross section at mid length	25mm
Spinnaker pole length (including hooks).....	...	1750mm

Effective : 1 May 2008